



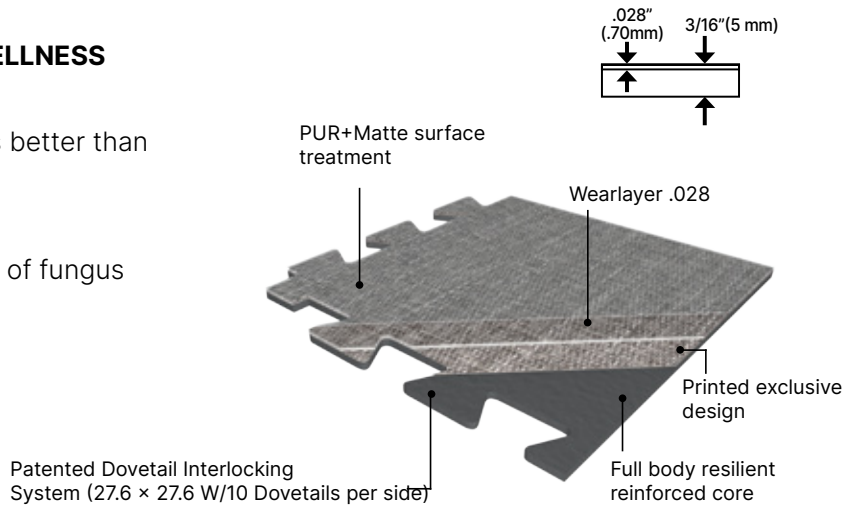
Creation Connect

Removable | PUR+Matte | FloorScore®

Creation Connect is a 3/16" (5mm) multilayered resilient interlocking tile. Its dovetail joints make it ideal for fast installations over many existing subfloors, including concrete, VCT and ceramic tiles. Creation Connect is ideal for high foot traffic areas and can handle light rolling loads. Creation Connect comes with our exclusive PUR+Matte finish which eliminates the glare associated with resilient flooring. It also allows for easy maintenance without waxing. Creation Connect is made with phthalate free plasticizers (except for recycled content).

CONTRIBUTES TO A SUSTAINABLE AND WELLNESS FOCUSED ENVIRONMENT

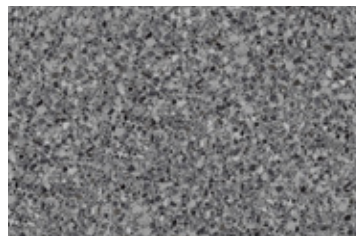
- ▶ Best indoor air quality: Low VOC; 10 times better than industry requirements
- ▶ 100% REACH compliant
- ▶ ISO 22196 compliant to inhibit the growth of fungus and bacteria.



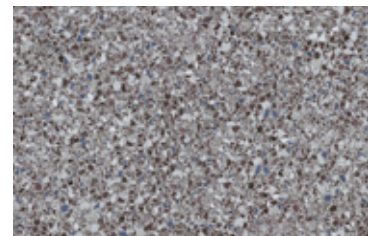
0088 GENTLEMAN GREY



0089 GENTLEMAN TAUPE



1088 DALMA GREY



1089 DALMA BURGANDY



0062 ROUGH TEXTILE BEIGE



0063 ROUGH TEXTILE GREY

Creation Connect

DESCRIPTION	STANDARDS	REQUIREMENTS	CREATION CONNECT
PRODUCT DESCRIPTION			
Reference Specification	ASTM F1700		Class III Type B
Backing	ASTM F1700	-	Resilient Core Backing
Surface Treatment / Maintenance	ASTM F1303	-	PUR+ Matte
Gauge Total Thickness	-	-	3/16" (5.0 mm)
Wearlayer Thickness	ASTM F386	-	28 mil (0.7 mm)
Tile Size	ASTM F410	-	27.6" x 27.6"
Coverage per Box	-	-	
Weight	-	-	1.69 lbs/ft ² (8.24 kg/m ²)
PERFORMANCE			
Abrasion	EN 660.2	-	≤ 2 mm ³
Indentation – Residual (75 lbs)	ASTM F1914	≤ - 8%	Meets Requirements
Coefficient of Friction	ASTM D2047	-	0.65 (Dry)
Impact Insulation Class (IIC)	ASTM E989	-	IIC 45
	ASTM E492		
Resistance to Heat	ASTM F1514	ΔE ≤8	Meets Requirements
Resistance to Light	ASTM F1515	ΔE ≤8	Meets Requirements
Dimensional Stability	F2199	< 0.02 in	Meets Requirements
Chemical & Stain Resistance (5 min and 24 hours)	ASTM F925	-	Meets Requirements
Fire Rating	ASTM E648	Class 1	Class 1
Smoke Density (Flaming and Non-Flaming)	ASTM E662	-	Meets Requirements
ENVIRONMENT HEALTH & SAFETY			
Naturally Bacteriostatic. Inhibits the spread of MRSA, E.Coli, S. aureus*	ISO 22196	-	Inhibits spread of infection at 99%
Allergen-Free	-	-	100% Allergen-Free
Plant Certifications	-	-	ISO 14001, ISO 9001
End of Life	-	-	100% Recyclable
MATERIALS & RESOURCES (MR)			
Sourcing of Raw Materials: Recycled Content	Sourcing LEED v4.1	-	55%
Restriction of Harmful Chemicals	Materials LEED v4.1	-	100% REACH Compliant
Environmental Product Declaration (EPD)	EPD LEED v4.1	-	Available Upon Request
INDOOR ENVIRONMENTAL QUALITY (IEQ)			
Indoor Air Quality / Low Emitting Materials	IEQ Option 1 LEED v4.1	-	FloorScore® Certified
TVOC after 28 days	ISO 16000-6	-	<100 µg/m ³
WARRANTY	10-year limited manufacturer warranty when installed in accordance with Gerflor's installation instructions on gerflorusa.com.		

*The implementation of an effective cleaning method is the best defense against infections. Please check gerflorusa.com for most recent installation, maintenance and specification guidance.



**NO heavy metals,
CMR 1, or CMR 2**

